

www.shimokamagari.jp



Ranto

Public Interest Cultural Promotion Foundation

2361-7 Shimojima, Shimokamagari, Kure city, Hiroshima 737-0301
TEL:0823-65-2029

Opening hours 9:00 - 17:00 (Last admission 16:30)

Closed on Tuesdays
(If Tuesday a national holiday, closed on next working day)



Shimokamagari, Kure City

Discover Ranto

Ranto Visitor Guide

A guide to six cultural facilities

A townscape with a
rich history and culture
reflecting the passage of time

SHOTOEN MUSEUMS
AND GARDEN

RANTOKAKU ART MUSEUM

HAKUSETSURO HOUSE

SANNOSE GOHONJIN MUSEUM
OF ART AND CULTURE

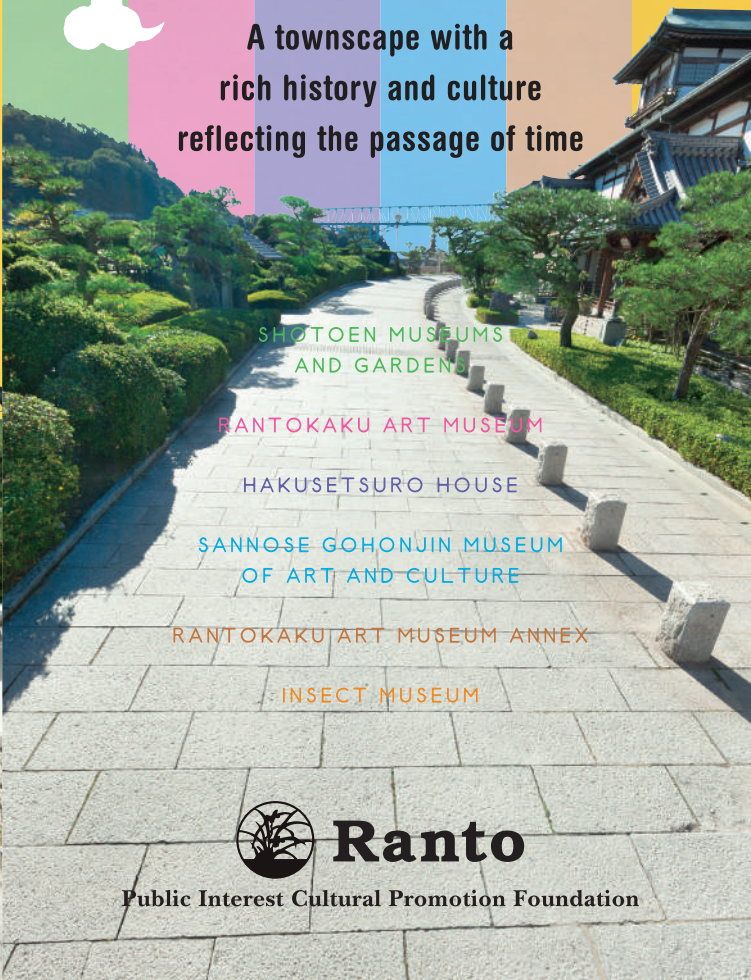
RANTOKAKU ART MUSEUM ANNEX

INSECT MUSEUM



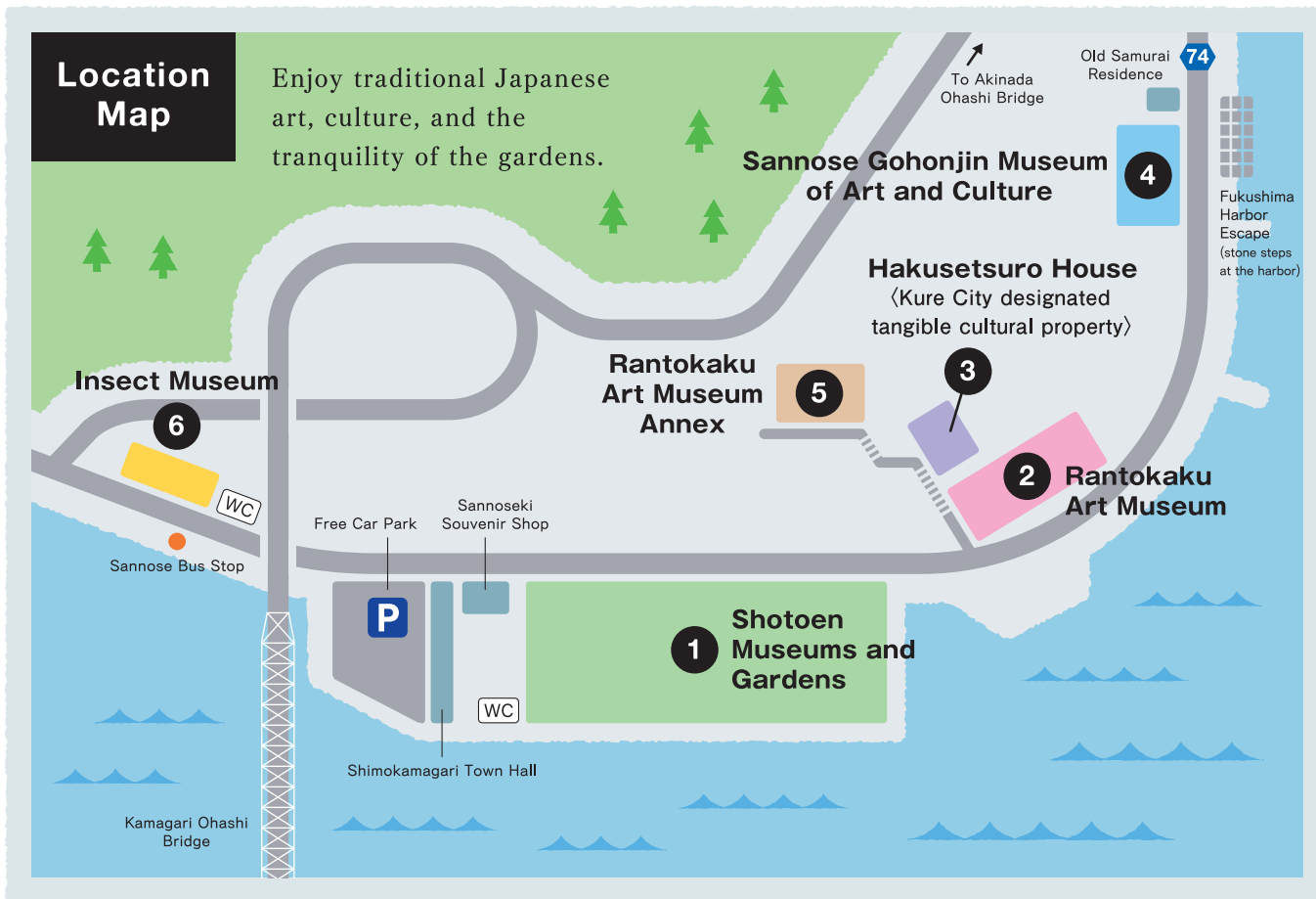
Ranto

Public Interest Cultural Promotion Foundation



Experience Japanese
culture in a beautiful
natural setting





1 Shotoen Museums and Gardens

Admission: Adult: 800yen, Senior High School Student: 480yen, Junior High/Elementary School Student: 320yen
 * Discounts available for multiple site visits



4 Sannose Gohonjin Museum of Art and Culture

Admission: Adult: 500yen, Senior High School Student: 300yen, Junior High/Elementary School Student: 200yen
 * Discounts available for multiple site visits




2 Rantokaku Art Museum

Admission: Adult: 500yen, Senior High School Student: 300yen, Junior High/Elementary School Student: 200yen
 * Discounts available for multiple site visits



5 Rantokaku Art Museum Annex

Admission: Adult: 300yen, Senior High School Student: 180yen, Junior High/Elementary School Student: 120yen



3 Hakusetsuro House


(Kure City designated tangible cultural property (powdered green tea is served))

Admission: Adult: 400yen, Senior High School Student: 240yen, Junior High/Elementary School Student: 160yen
 * Discounts available for multiple site visits



6 Insect Museum

Admission: Adult: 300yen, Senior High School Student: 180yen, Junior High/Elementary School Student: 120yen



Ranto, an island with beautiful gardens, welcomes you to enjoy traditional Japanese art and culture

Shimokamagari, once known as “Ran To”, or “Orchid Island”, for its wild Noble Orchids, prospered as an important point for maritime traffic in the past. There are six cultural facilities introducing Japanese art and culture on the island. Enjoy exploring Shimokamagari, with its beautiful views of the seashore and pine groves creating a perfect harmony with the traditional townscape of the island.

1

Spot

Shotoen Museums and Gardens



Shotoen showcases the rich heritage of the island

Shotoen was named to reflect the beauty of the pine trees in the Japanese gardens enhanced by the view of the Sannose-seto Strait. There are four museums on the site, each building having been either relocated from elsewhere in Japan or restored.



The view of the stroll garden (Kaiyushiki Teien) changes throughout the year. No matter when you visit, you will enjoy the beauty brought by that season.



Historical collections unfold the colorful past of the island



The Grand Banquet House
Commemorative Museum
of Korean Missions

There are four museums in Shotoen. The Grand Banquet House showcases the history of the Korean Diplomatic delegation, which visited the island during the Edo period. The Ceramics Museum has a fine collection of early Imari ware, and the Lamp Museum exhibits exotic and rare lamps from all over the world. The Guard House is a restoration of the original 17th century building.



Lamp Museum



Ceramics Museum



The Grand Banquet House provides a rare opportunity to study the history of the Korean Diplomatic delegation on the island.

1 (Lamp Museum) The museum has a collection of rare lighting devices ranging from ancient terracotta lamps to Japanese paper lanterns

2 (Ceramics Museum) A view of the Courtyard 3 (Ceramics Museum) The fine collection of early Imari ware is well worth a visit

NOTE!

Experience the spirit of
“Wabi” and “Sabi”

The Kamagari Guard House



In the Guard House, a tea ceremony is held twice a year in spring and autumn giving visitors an opportunity to experience the essence of Japanese culture.



Works by renowned modern Japanese painters are displayed in this impressive building

The museum houses a permanent collection of more than 2,200 works, including oil paintings, traditional Japanese paintings, sketches, and wood-block prints by famous and local Japanese artists.



1 Grand staircase

2 (Gallery 1)

The gallery is designed in a traditional Japanese style. Floors are carpeted inside for your comfort. Please take off your shoes before entering.

NOTE!

The building was named after the Noble Orchid, which once grew wild on the island.



There are decorative motifs representing the orchid inside the building. The beautiful Japanese building and surrounding nature will enhance your visit to the museum.



The house and traditional tearoom are fine examples of the late Edo period style



Hakusetsuro was originally built in Kyoto in the 18th century. The house was converted into two stories in the mid 19th century, with the second floor once being used for the study of Chinese classics. It was donated to Shimokamagari in 1993, taking two years to rebuild. Timbers still retain the marks used for reconstruction. The interior displays ingenuity in its design, and of particular interest is the room with a secret escape, a rare example of a style typical of the late Edo period.



1 (Study on the second floor) Ceiling panels, replicas of the originals, are inscribed with Chinese poetry written by Su Shi of the Northern Song Dynasty. **2** (Secret door and passage) A six-foot-wide wall by the alcove is a secret escape to a passage behind the room. **3** (Chashitsu) The tearoom represents the architectural style typical of the Edo period.



NOTE! Time for a bowl of green tea?



You will be served traditional powdered green tea in a room on the first floor. Please enjoy the view from the room while drinking your tea.

Sannose Gohonjin Museum of Art and Culture



The museum shows a permanent exhibition of the works of Kunitaro Suda, the great master of modern Japanese painting

Kunitaro Suda (1891 – 1961) was a leading figure in modern Japanese painting, and an authority of the Independent Art Society. The museum houses his permanent exhibition, along with those of other Japanese artists, with a particular emphasis on the 1920s onward. The exterior of the building, which has been restored to its traditional Honjin style, was used as an officially appointed inn by the Tsushima clan during the Edo period.



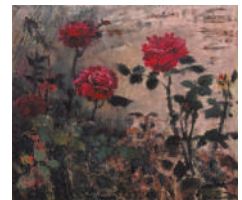
1



2

1 (Gallery with a high ceiling)
The gallery creates a relaxing atmosphere.

2 (Gallery on the second floor)
A permanent exhibition of Suda's works is held on this floor.



Left: A collection of Suda's memorabilia is displayed on the second floor
Right: "Red Roses", Kunitaro Suda, Oil 1942

NOTE!

Historic remains near Honjin



The "Fukushima Harbor Escape" in front of the museum has historic importance for its use as a landing place for Korean diplomatic missions. Step back in time as you stand on the escape.



The view of Sannose-seto from the art gallery is splendid.



1 (Gallery) The permanent exhibition of Manjiro Terauchi 2 (Lounge) Resting area 3 (Paint Box) Used by Manjiro Terauchi

Standing on the top of a small hill, the art gallery houses the permanent exhibition of Manjiro Terauchi

The annex holds a permanent exhibition of oil painter Manjiro Terauchi, famous for his nude paintings. Some of his mementos including paintbrushes and palettes are also on display. From the top of the hill, visitors can enjoy the view of Kamagari Ohashi Bridge crossing the Sannose-seto Strait.

NOTE!

Who was
Manjiro Terauchi?



"Hair", Manjiro Terauchi, Oil 1961

Manjiro Terauchi (1890 – 1964) was an oil painter known for his paintings of female nudes. In his pursuit of capturing the beauty of Japanese women, he was one of the first artists to express their self-assured femininity in his work. Although he was born in Osaka, he had roots in Kamagari as his father was from the island.



The museum contains a large collection of local insects, as well as rare species from around the world

Displays include minute insects, Japanese dragonflies, local Shimokamagari insects, and endangered species in Hiroshima. Events such as making insect specimens are held during the summer holidays.



The museum building is a renovated Sukiya-style house. Plants favored by butterflies are grown in the garden, and wild butterflies may be found here.

**NOTE!**

The exhibition room displaying rare specimens creates a world of wonder



The Pseudo-Labyrinth, an ancient butterfly native to Shimokamagari, and the South American Morpho butterfly with metallic blue wings, are displayed along with other types of insects.

Annual Events

♪ Rantokaku Gallery Concert

The Rantokaku Gallery Concert is held on the third Saturday of each month



The Rantokaku Gallery Concert is a chamber concert held in the gallery in the evening. Performers, varying from top-class international artists to up-and-coming musicians, all enjoy playing here. The concerts are known for the friendly rapport between artists and the audience. Enjoy a special evening in a relaxing atmosphere.

Pageant of Old Korean Missions

A historical parade unfolds every autumn in Shimokamagari, adding bright colors to the island.



When the Korean Missions visited Shimokamagari during the Edo period, they received a lavish welcome from the entire population of the island. It was said that the reception was so grand that the whole island was in danger of sinking! In this reenactment, about 250 local people in colorful costumes join the parade.

Getting Here

From Hiroshima City:

By Car

(Approx. 60mins)

Drive to central Kure, and take Route 185 toward Takehara. Shimokamagari is the first island after crossing Akinada Ohashi Bridge (toll bridge). There is free parking available near the facilities.

By Bus

Take a bus destined for "Kamagari Toyohama Yutaku" from Hiroshima Bus Center. Get off at Mitohiro and take the next bus to Gunose.

From Kure City:

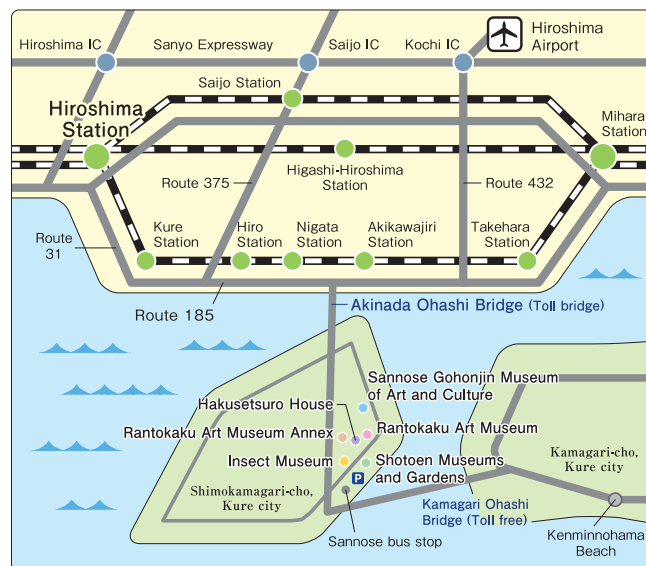
By Train & Bus

Take the JR Kure line and get off at Hiro or Nigata. Take a bus operated by Setouchi Sanko Co. Ltd. from the nearest bus stop and get off at Sannose (buses run every hour in both directions).

For more details:

Sanyo Bus Co. Ltd: 0846-65-3531

Setouchi Sanko Co. Ltd: 0823-70-7051



For more information:

Ranto Public Interest Cultural Promotion Foundation

HOME PAGE <http://www.shimokamagari.jp/>

TEL: 0823-65-2029 FAX: 0823-70-8079 E-mail: info@shimokamagari.jp

2361-7 Shimojima, Shimokamagari, Kure city, Hiroshima 737-0301